

Color Card  
Gold  
铜金色卡







Luminor®, Constant® and Unicoat® Gold Bronze Pigments(铜金颜料)

| Product<br>产品    | Shades <sup>1</sup><br>颜色                   | Outstanding Features<br>产品特性 |                   | PSD <sup>2</sup><br>粒径分布度<br>D50 |
|------------------|---|------------------------------|-------------------|----------------------------------|
|                  |   | Fineness<br>细度               | Brilliance<br>光亮度 |                                  |
| <b>Luminor®</b>  |   |                              |                   |                                  |
| 2210             | RG, RPG, PG, CO, DG                         | very coarse 很粗               | excellent 完美      | 50                               |
| 2250             | RG, RPG, PG, CO, EG, CT, GC, DG, FR         | coarse 粗                     | excellent 完美      | 35                               |
| 2550             | RG, RPG, PG, CO                             | coarse 粗                     | premium 优异        | 35                               |
| 2580             | RG, RPG, PG, CO, EG, CT, GC, DG, FR, MR, SY | medium coarse 中粗             | premium 优异        | 20                               |
| 2280             | RG, RPG, PG, CO, DG                         | medium coarse 中粗             | good 好            | 20                               |
| 2350             | RG, RPG, PG, CO, DG                         | medium 中等                    | good 好            | 16                               |
| <b>Constant®</b> |   |                              |                   |                                  |
| 200/N            | RG, PG, CO                                  | extra coarse 极粗              | very good 很好      | 200                              |
| 2210/N           | RG, RPG, PG, CO                             | very coarse 很粗               | very good 很好      | 45                               |
| 2250/N           | RG, RPG, PG, CO                             | coarse 粗                     | very good 很好      | 33                               |
| 2280/N           | RG, RPG, PG, CO, EG, CT, DG, FR             | medium coarse 中粗             | good 好            | 28                               |
| 4117/N           | RG, RPG, PG, CO                             | medium 中等                    | good 好            | 11                               |
| <b>Unicoat®</b>  |   |                              |                   |                                  |
| 3050             | RG, RPG, BG, CO                             | medium 中等                    | very good 很好      | 12                               |
| 3220             | RG, RPG, PG, CO, EG, CT, GC, DG, FR, MR     | fine 细                       | premium 优异        | 10                               |
| 3230/NL          | RG, RPG, PG, DG                             | fine 细                       | non leafing 非浮    | 9                                |
| 3260             | RG, RPG, PG, CO                             | very fine 极细                 | fair 适当           | 6                                |

<sup>1</sup> Shades 色相:

- CO: Copper 古铜
- PG: Pale Gold 红金
- RPG: Rich Pale Gold 青红金
- RG: Rich Gold 青金
- DG: Ducatgold [Deep Gold] 纯金光色
- GC: Gold Color 金黄色
- CT: Citron (Lemon) 柠檬色
- EG: English Green 英国绿
- FR: Fire Red 火红色
- MR: Maroon 褐红色
- SY: Syringa 淡紫色

<sup>2</sup> PSD [Particle size distribution] 粒径分布度

measured by Laser Diffraction Sympatec Helos®  
激光衍射测量 Sympatec Helos®

Gold Bronze Pigments  
for the Paints and Powder Coatings Industry

SCHLENK presents Luminor®, Constant® and Unicoat® gold bronze pigments. This range of pigments offers the possibility to create optical effects from fine to coarse or sparkling. Besides the standard colors, fire colored gold bronze pigments in intense colors can be found, e.g. Syringa, the new color trend.

Gold bronze pigments consist of copper or copper-zinc alloys (brass) and, in contrast to aluminium pigments, are milled when dry. The composition determines the color: Copper, Pale Gold (approx. 10% Zn), Rich Pale Gold (approx. 20% Zn) or Rich Gold (approx. 30% Zn).

Oxidation is being used to produce other colors whereas the selection of the appropriate particle size selection is based on the desired optical effect.

We recommend to test our gold bronze pigments in the corresponding coating system on their suitability and fulfillment of the specific requirements in each application.

Our global technical service team will be pleased to answer your questions related to this range of products.  
For more information please go to: [www.schlenk.com](http://www.schlenk.com)

涂料及粉末涂料工业用铜金粉

舒伦克为您介绍 Luminor®, Constant® 和 Unicoat® 系列铜金粉。  
该系列颜料能够提供多种光学效果从细到粗或者闪亮的效果。除标准颜色之外,火色系铜金粉更是能够表现强烈的色彩效果,例如新研发的淡紫色(Syringa)铜金颜料。

铜金颜料由铜或铜-锌合金(黄铜),与铝颜料制备工艺相反,铜金粉是由干燥状态下研磨而成。铜金粉的成分决定其颜色:铜,红金(约10%锌),青红金(约20%锌)或青金(约30%锌)。

而通过氧化工艺来生产其他的颜色效果,并基于所需的色彩效果从而选择大小合适的颗粒。

我们推荐在相应的涂料系统里并能够实现特定要求的应用中来测试我们的铜金颜料。

我们全球的技术服务团队将非常乐意为您解答相关的产品问题。  
如需更多信息,请访问 [www.schlenk.com.cn](http://www.schlenk.com.cn)

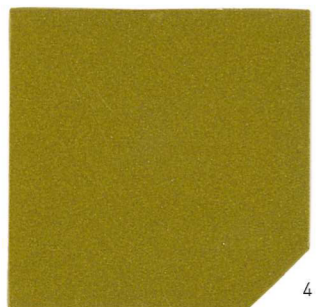
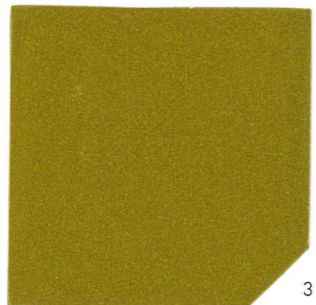
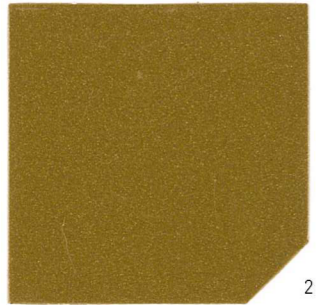
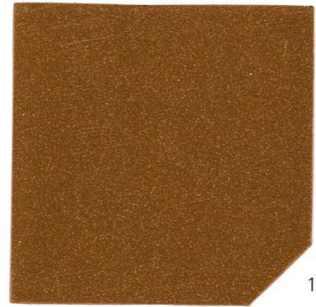




# SCHLENK COLORS\*

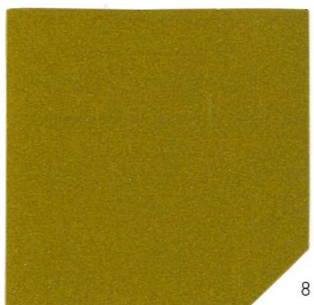
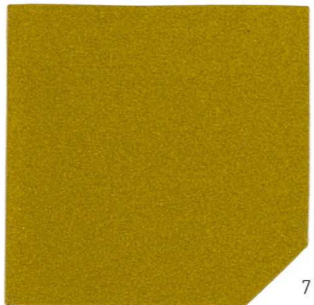
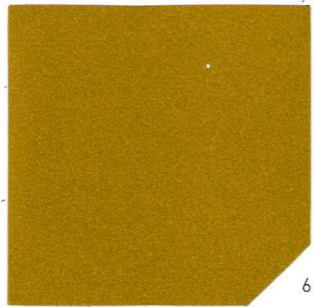
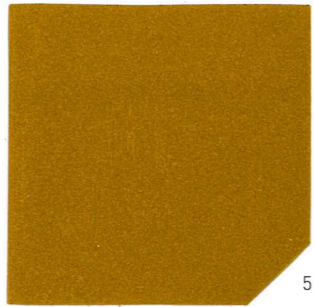
## Standard Colors 标准颜色

- 1 Copper 古铜
- 2 Pale Gold 红金
- 3 Richpale Gold 青红金
- 4 Rich Gold 青金

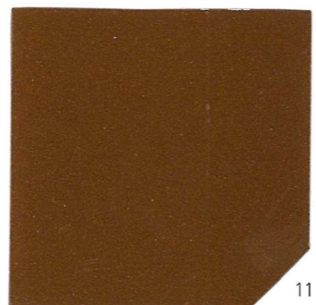
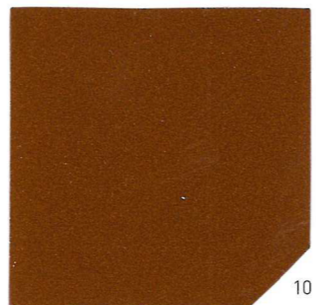
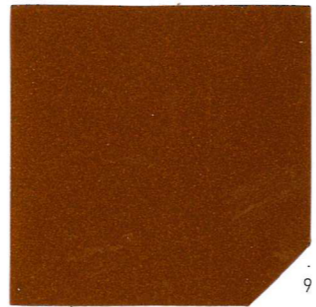


## Special Colors 特殊颜色

- 5 Ducatgold (Deep Gold) 纯金光色
- 6 Gold Color 金黄色
- 7 Citron 柠檬色
- 8 English Green 英国绿



- 9 Fire Red 火红色
- 10 Maroon 褐红色
- 11 Syringa 淡紫色

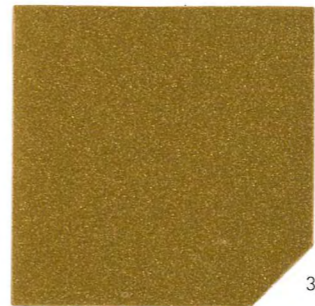
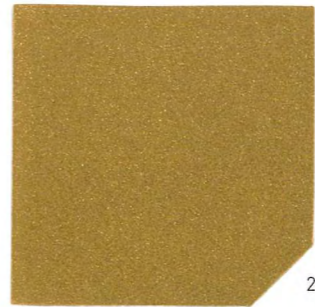


\* COLORS DEMONSTRATED IN LUMINOR® 2580  
\*多种颜色中产品展示  
LUMINOR® 2580

# SCHLENK BRANDS\*\*

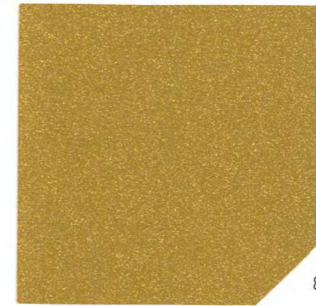
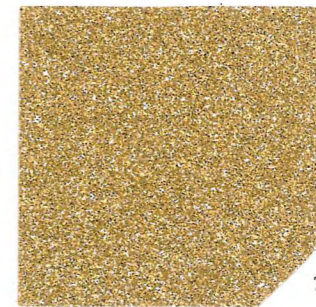
## Luminor®

- 1 2210
- 2 2250
- 3 2550
- 4 2580
- 5 2280
- 6 2350



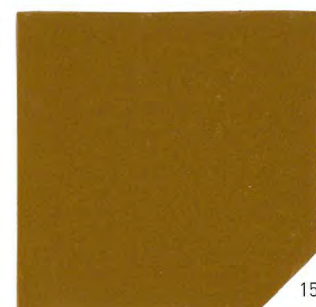
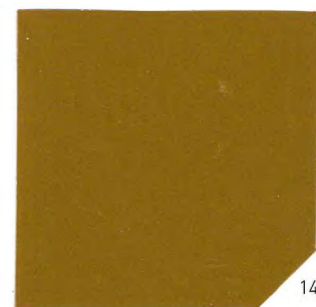
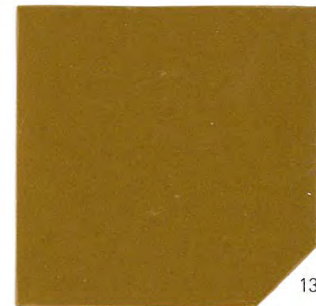
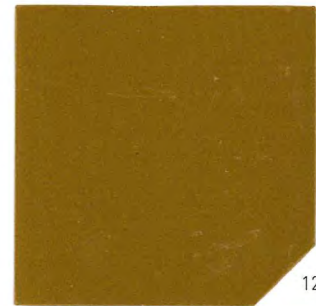
## Constant®

- 7 200/N
- 8 2210/N
- 9 2250/N
- 10 2280/N
- 11 4117/N



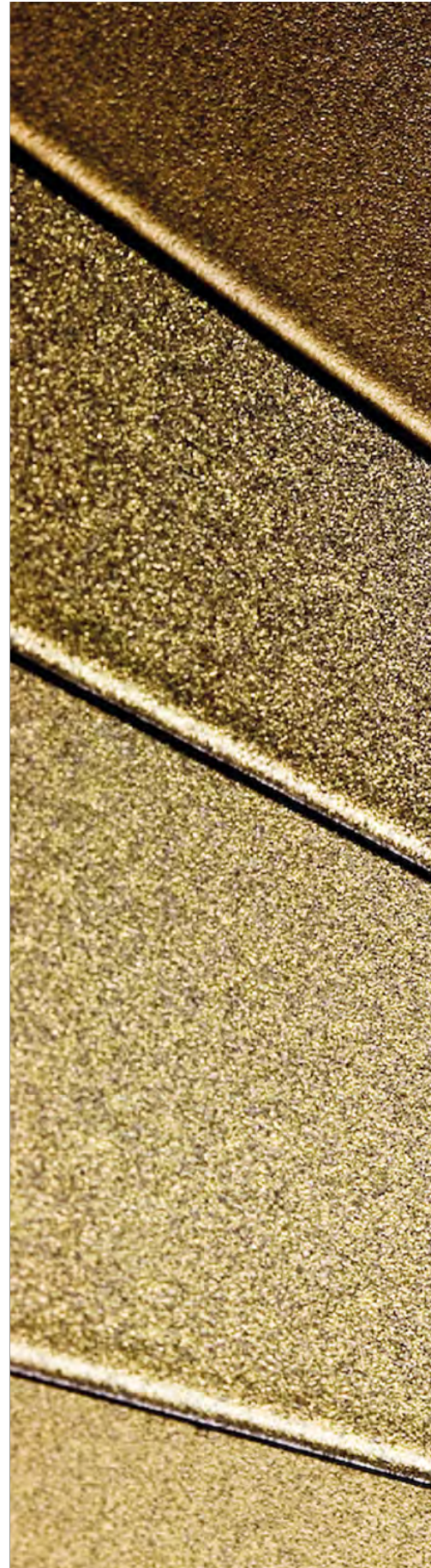
## Unicoat®

- 12 3050
- 13 3220
- 14 3230/NL
- 15 3260



\*\* PRODUCT PORTFOLIO DEMONSTRATED IN PALE GOLD  
\*\*红金色相系列产品展示





**SCHLENK** 

SCHLENK METALLIC PIGMENTS GMBH  
Barnsdorfer Hauptstr. 5  
D-91154 Roth/Germany  
[www.schlenk.com](http://www.schlenk.com)

Tel.: +49 (0)9171 808 0  
Fax: +49 (0)9171 808 200  
E-Mail: [coatings@schlenk.de](mailto:coatings@schlenk.de)

Schlenk Metallic Pigments  
(Shanghai) Co. Ltd.  
Building No. 9  
No. 99 Huajia Road  
Hua Bin Industrial Park  
Songjiang Industrial Zone  
Shanghai 201611  
China  
[www.schlenk.com.cn](http://www.schlenk.com.cn)

舒伦克金属颜料  
(上海) 有限公司  
中国上海市  
松江区华加路99号  
华滨工业园9号厂房

电话: 86 21 5774 9910  
传真: 86 21 5774 9920

In view of their policy of continuous improvement, the company reserves the right to change the specification and design. Data in this publication is based on careful investigations and is intended for information only. All information shall be not binding, shall carry no warranty as to certain ingredients, as to the fitness for a special purpose, as to the merchantability or as to industrial property rights of third parties. Any and all users are obliged to carry out tests on their own authority as well as to check the suitability and the danger of the respective product for a particular application. Schlenk shares no liability hereof and as to the exactness and completeness of the data. We apply our General Sales Conditions to be found on [www.schlenk.com](http://www.schlenk.com).

Printed in Germany. CS 02/13

鉴于持续改进的方针, 公司保留更改产品的规格及设计内容的权利。本出版物中所包含的数据是基于缜密调查而得出, 但仅供用户参考。因此所包含的信息将不具任何约束力, 所以不对任何暗示其商业性、其他特别的用途、第三方的工业产权的担保。任何用户有义务依据产品的特定用途的进行适用性和危险性测试, 舒伦克对此数据的准确性和完整性概不负责。我们将此应用于一般情况下的销售条件。(请查看我司网站 [www.schlenk.com.cn](http://www.schlenk.com.cn))。

德国印制 CS 02/13